

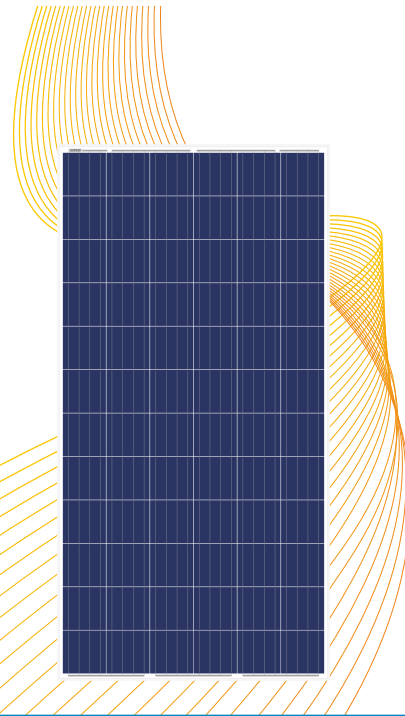
POLY CRYSTALLINE MODULE

DM325-P156-72

72 x 6" / 315-325W

Wattages:

315 / 320 / 325



Technology

High module conversion efficiency through superior manufacturing technology



PID Free



Power-Positive Tolerance

Guaranteed power output(0/+3%)



Performance

High performance under low light conditions (Cloudy days, mornings and evenings)



Quality

Manufactured according to International Quality and Environmental Management Systems (ISO9001, ISO14001)



Value

Our vertically integrated business model allows for competitive pricing and great value

www.dmegcsolar.com

Superior Manufacturing-Quality Assurance



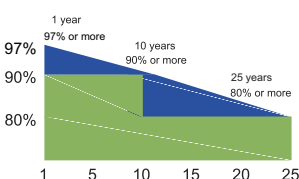
- All modules are manufactured using TQC & SPC quality control systems
- Advanced cell sorting to avoid electric mismatch
- 100% EL Test-before lamination & prior to shipment
- Comprehensive Safety and Reliability tests are performed

Power Output



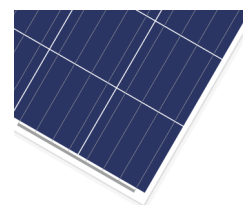
- Our IP67 rated junction box improves module performance and stability
- High-performance connectors provide low resistance interconnection to ensure the full utilization of module output power

Warranty



- 10 Years Manufacturers Warranty
- 10 Years Warranty, 90% power output
- 25 Years Warranty, 80% power output

Visible Quality



- Durable, high-quality
- Rigid construction: 5400Pa & 2400Pa rated assembly



Electrical Specifications

* STC irradiance of 1000W/m² spectrum AM 1.5 and cell temperature of 25°C

Module Type	Pm(W)	Tolerance	Imp(A)	Vmp(V)	Isc(A)	Voc (V)	Module Efficiency
DM315-P156-72	315	0/+3%	8.58	36.75	9.07	45.76	16.23%
DM320-P156-72	320	0/+3%	8.68	36.89	9.15	45.88	16.49%
DM325-P156-72	325	0/+3%	8.79	37.03	9.23	46.00	16.75%

Mechanical Data

Cell Type	DMTP4B157x157
Cell Arrangement	72(6x12)
Module Structure	Glass/ EVA / Backsheet(white)
Glass Thickness	4.0mm
Application Class	Class A at IEC 61730
Junction Box Rating	IP 67
Cables	1000mm/4mm ²
Connector Type	05-6
Fire Rating Class	Class C

Maximum Ratings

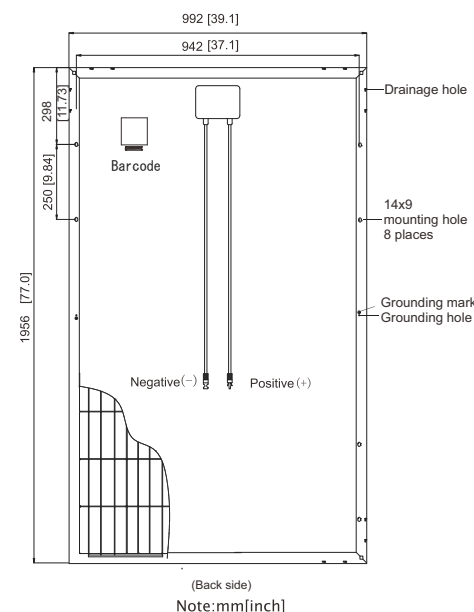
Operating Temperature	-40°C to +85°C
Maximum Load Capacity	Snow 5400Pa / Wind 2400Pa
Maximum System Voltage	600V DC(UL) / 1000V DC(IEC)
Maximum Series Fuse Rating	15A
Number of Diodes	3

Packaging

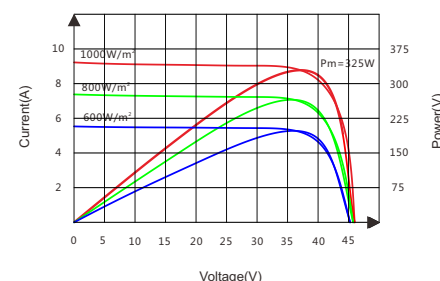
Module Dimensions	1956x992x45mm
Weight	26kg
Pallet Dimensions	2010x1130x1130
Container	40' HQ
Pieces per Pallet	23
Pallets per Container	22
Pieces per Container	506
Gross Weight per Pallet	645kg
Gross Weight per Container	14,190kg

Temperature Characteristics

Nominal Operating Cell Temperature (NOCT)	45°C±2°C
Temperature Coefficient of Isc	+0.057%/°C
Temperature Coefficient of Voc	-0.308%/°C
Temperature Coefficient of Pmax	-0.406%/°C



Current-Voltage&Power-Voltage Curve(325W)



Temperature Dependence of Isc, Voc, Pmax

